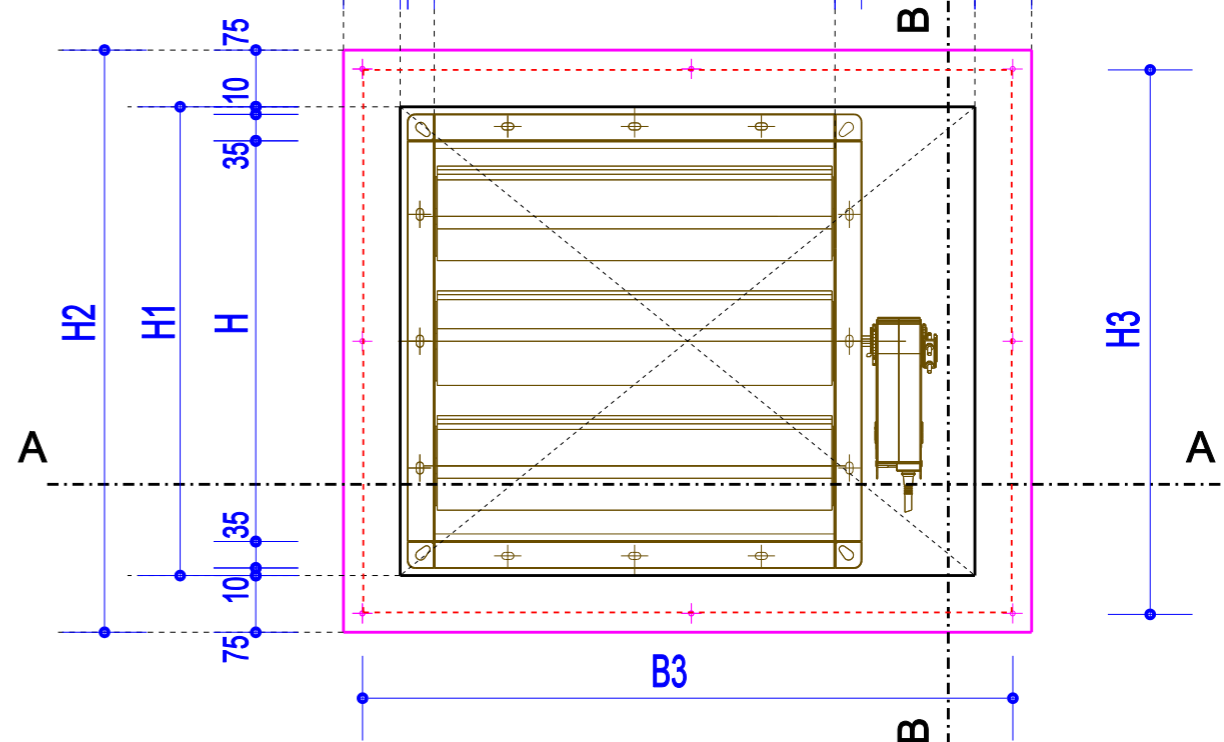


JK-180 HVL = Ventilation flap with mounting plate + roof vent with blades

JK-180 HVL						
Designation according to the ventilation flap opening (mm) BxH	360x360	530x530	700x700	860x860	1030x1030	1200x1200
Net ventilation surface (m <sup>2</sup> )	0,10	0,23	0,41	0,62	0,90	1,22
Opening dimensions (mm) B1 x H1	590 x 450	760 x 620	930 x 790	1090 x 950	1260 x 1120	1430 x 1290
Mounting plate dimensions (mm) B2 x H2	740 x 600	910 x 770	1080 x 940	1240 x 1100	1410 x 1270	1580 x 1440
Cover dimensions (mm) B3 x H3	690x550	860x720	1030x890	1190x1050	1360x1220	1530x1390
Base plate height (mm) L1	500	500	500	500	500	500
Cover height (mm) L2	320	320	320	385	450	515
Overall height of the roof vent (mm) L3	770	770	770	835	900	965



## Ventilation flap with mounting plate + roof vent with blades Horizontal mounting

SCALE 1:10  
DATE: 24.04.2014