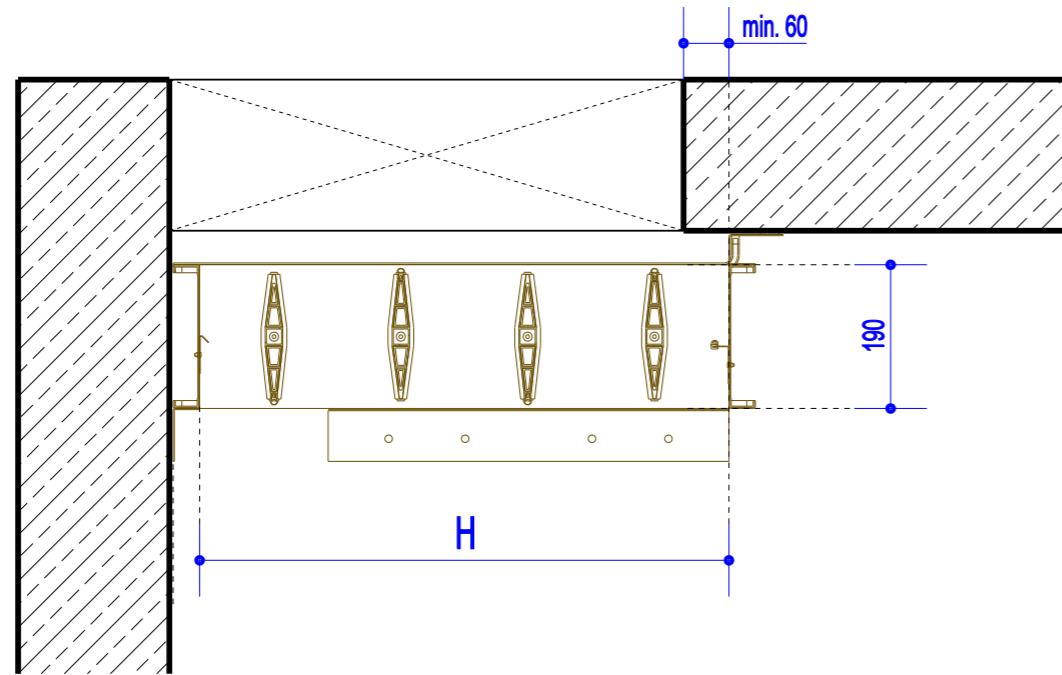
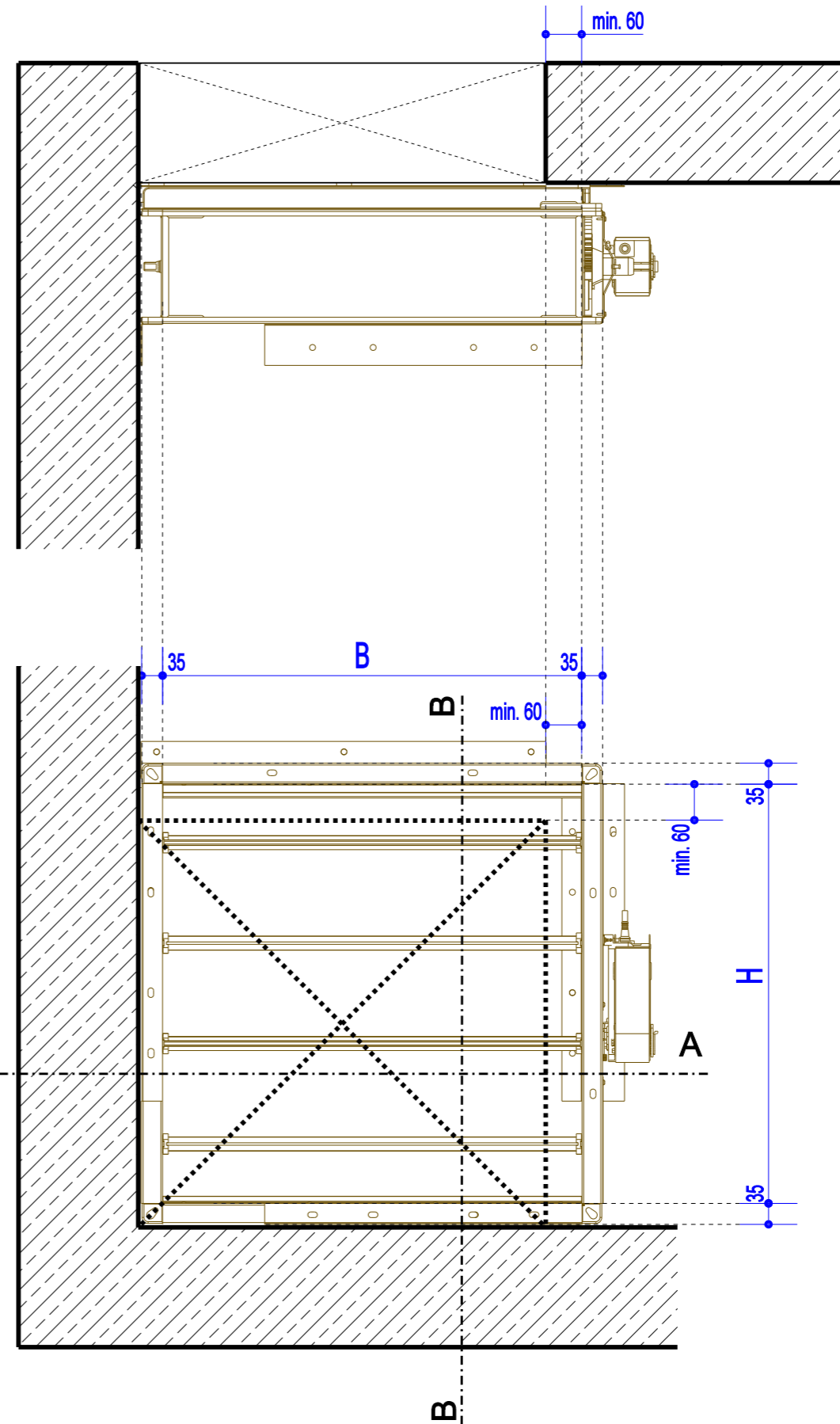


Section B-B



Section A-A



JK -190 = Ventilation flap						
JK-190*						
Flap opening dimensions (mm) H/B	Net ventilation surface (m2)					
		360	530	700	860	1030
360	0,1	0,15	0,2	0,25	0,3	0,35
530	0,16	0,23	0,3	0,37	0,45	0,52
700	0,21	0,31	0,41	0,5	0,6	0,7
860	0,26	0,38	0,51	0,62	0,75	0,87
1030	0,31	0,46	0,61	0,75	0,9	1,04
1200	0,37	0,54	0,71	0,87	1,05	1,22

*Standard dimensions in grey

Ventilation flap JK-190 mounting in the concrete ceiling - slab / corner

SCALE 1:10
DATE: 24.04.2014



BlueKit[®]
by BK-Factory