

VENTILATION COMPONENTS

Space-saving slide flap

The closing element for horizontal or vertical surface-mounted installation contains a movable sliding panel in its frame, which is operated by a motor. This patented system has reduced the panel thickness to a minimum.

The slide flap is therefore ideal for use in existing buildings, as it does not protrude too deeply into the shaft, nor further reduce the free cross section of the existing opening.

Benefits

- » U-value 1.82 W(m²*K) calculated according to EN ISO 12567-2
- » Surface-mounted installation for existing openings
- » The minimal frame height of 40 mm enables installation at the top of the shaft when there is little space
- » Airtight in accordance with GEG requirements
- » Low-noise drive

Performance profile

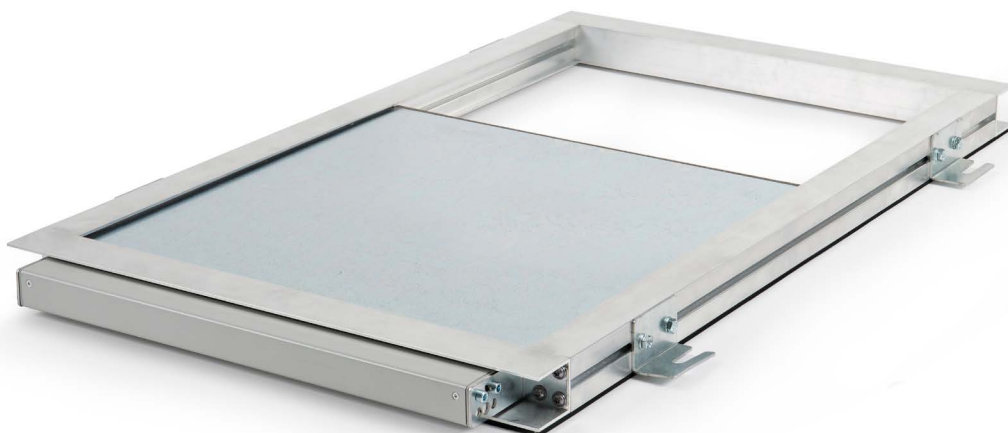
- » Use: If the existing opening is not larger than the required smoke extraction cross-section
- » Can be adapted to many ventilation openings
- » Installation hooks for simple and flexible installation

Technical specifications

- » Pre-installed and cabled chain drive for opening the sliding panel
- » Aluminium frame and galvanised sheet steel panel

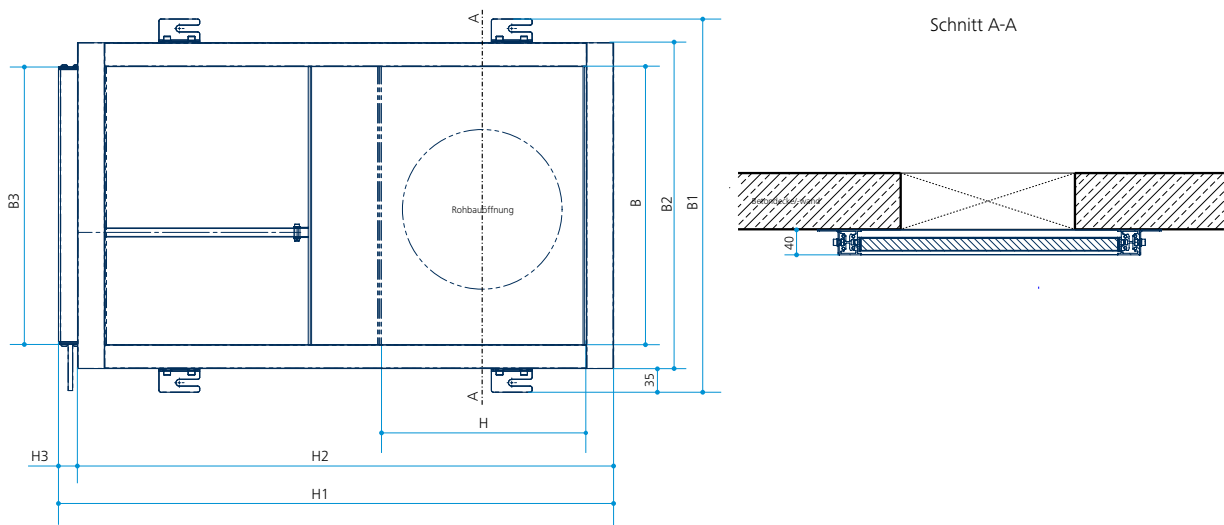
Installation

- » The space-saving slide flap is fastened into the shaft wall or cover with the aid of the installation frame
- » Corner installation possible thanks to the supplied installation hooks



Space-saving slide flap with U-value

Designs and dimensions



Slide flap			
Article name	Slide flap 410	Slide flap 760	Slide flap 1160
Ventilation opening (mm) WxH	410x300	760x350	1160x350
Net ventilation area (m ²)	0.12	0.26	0.40
Recommended installation area incl. installation hooks (mm) W1xH1	550x817.5	900x1077.5	1300x1458
Frame dimensions (mm) W2xH2	480x790	830x790	1230x1430
Motor dimension (mm) W3xH3	409x27.5	409x27.5	504x27.5
Number of installation hooks	4	6	10
Weight (kg)	7.11	13.90	27.68
U-value (W(m ² *K))	1.82	1.82	1.82