

VENTILATION COMPONENTS

Blind JK-190 for existing openings

Natural smoke and heat exhaust ventilator (NSHEV) for closure of permanent openings at the top of the shaft in existing properties – horizontal or vertical surface mounting. The blind is equipped with a spring return motor and so opens automatically in the event of a power cut. Alter-

natively, the blind is available with a low-noise DC motor (ref. JK-190-dB – this version requires additional emergency power batteries for the AIO central unit).



Benefits

- » Surface-mounted installation for existing openings
- » Airtight in accordance with GEG requirements
- » Spring return motor, battery-free operation possible
- » System-tested in compliance with DIN EN 12101-2
- » In accordance with VdS data sheet 2895

Performance profile

- » Use: If the existing opening is not larger than the required smoke extraction cross-section
- » Can be adapted to many ventilation openings

Technical specifications

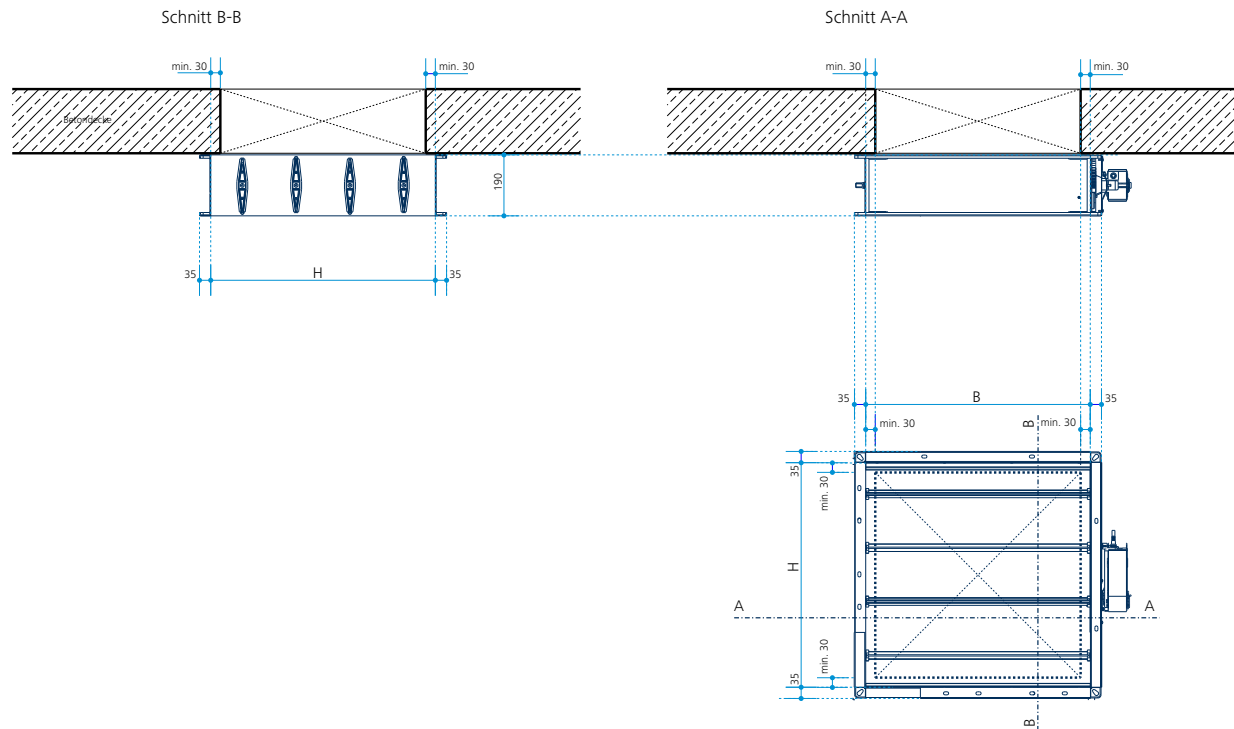
- » Aerodynamic and torsion-resistant aluminium louvres
- » Seals made of special rubber
- » Profiled, galvanised mounting plate, 1.5 mm thick, dimensionally stable
- » Fail-safe function by means of a spring return in the motor in case of a power cut
- » Deeper housing allows larger ventilation area (free movement of the louvres and increased air flow between them)

Installation

- » For secure mounting, ensure that the ventilation opening (WxH) of the blind is at least 30 mm larger than the existing unfinished opening
- » The blind is fastened into the shaft wall or cover with the aid of the installation frame
- » Corner installation possible using special installation brackets

Blind JK-190 for existing openings

Designs and dimensions



JK-190* | free cross section (m²)

Ventilation opening (mm) HxW	360	470	530	700	860	1030**	1200**
360	0.10	0.13	0.15	0.20	0.25	0.30	0.35
530	0.16	-	0.23	0.30	0.37	0.45	0.52
700	0.21	-	0.31	0.41	0.50	0.60	0.70
860	0.26	-	0.38	0.51	0.62	0.75	0.87
1030**	0.31	-	0.46	0.61	0.75	0.90	1.04
1200**	0.37	-	0.54	0.71	0.87	1.05	1.22
Installation depth (mm) of the blind	190	190	190	190	190	190	190

* Common standard dimensions marked in grey

**Dimensions over 1000 mm not available with db motor version